

2015 WeALLCount

Data & Results: General

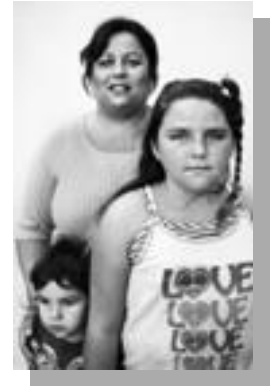
Homelessness IS Solvable.

The Regional Task Force on the Homeless is at the forefront of our region's efforts to ensure that we have sustainable and effective solutions for addressing homelessness. Data from the WeALLCount Campaign is an essential tool in these efforts.

The Count results in approximately \$16 Million in federal funding (HUD) for local homeless services. These organizations provide services for the thousands of individuals and families who experience homelessness annually in our region.

HOMELESS SUMMARY - POINT-IN-TIME COUNT

	<u>2014</u>	<u>2015</u>	<u>CHANGE</u>
Total Homeless	8,506	8,742	+2.8%
Unsheltered	3,985	4,156	+4.3%
Sheltered	4,521	4,586	+1.4%



UNSHELTERED HOMELESS SUMMARY - POINT-IN-TIME COUNT*

	<u>2015</u>	<u>% of Unsheltered</u>
Males, all ages	2,911	70.0%
Veterans**	631	15.4%
Substance Abuse**	370	9.3%
Severe Mental Health Issues**	744	18.6%
Chronically Homeless Individuals**	1,249	31.3%
Homeless – Year or Longer THIS Time	2,916	70.2%
Used the Emergency Room Past Year	1,884	45.3%
Stay in San Diego County year round	3,582	86.2%
Currently on Probation or Parole	601	14.5%
No Health Insurance	1,105	26.6%

*Estimates are extrapolated from a sample of 814 surveys.

**Individual Adults and Adults in Families



WeALLCount VOLUNTEERISM

	<u>2014</u>	<u>2015</u>
Volunteers	1,356	1,488
Deployment Centers	25	28
Eligible Surveys Conducted	743	814

*Estimates are extrapolated from a sample of 814 surveys.

www.rtfhsd.org
 www.facebook.com/rtfhsd
 www.twitter.com/rtfhsd

4699 Murphy Canyon
 San Diego, CA 92123



Final PITC Data for WeALLCount 2015